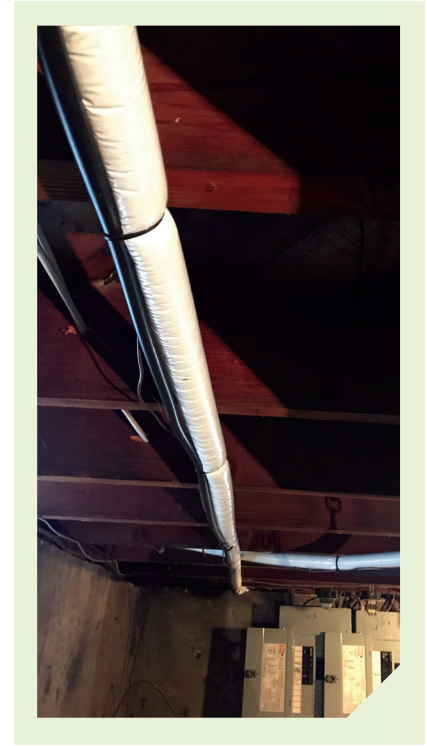


THE MICHIGAN MODEL

A direct comparison reveals the clear choice.



“We had a compared 93' of scrap with copper units versus absolutely no waste with YogaPipe.”

— INSTALLING CONTRACTOR

BACKGROUND:

To measure and analyze the cost variances between YogaPipe and copper the contractor used copper line sets for 9 units and Yoga Pipe for 9 units. The copper line sets used had the equivalent white insulation found on Yoga Pipe, not the black rubber insulation (i.e. Armaflex).

MATERIALS:

Yoga Pipe required 1 x 200' line set of 3/8" and 3/4" (9 sets of fittings included) at an approximate material cost of \$842.24.

Copper required 6 x 50' line sets of 3/8" and 3/4" at an approximate material cost of \$1,056.00.

This represents a straight materials cost benefit of \$213.76 per 9 units.

Contact your local YogaPipe representative or go to YogaPipe.com to see how YogaPipe can work for you.